



BRILLIANT ELEVATOR

TECHNOLOGY LEADS THE MARKET
SERVICE CREATES VALUE

CONTACT US

CIS Branch

Email: blt.cis@bltcn.cn
Tel: +86 24 25162836

Russia Branch

Email: blt.russia@bltcn.cn
Tel: +86 24 25162890

Middle East Branch

Email: blt.mideast@bltcn.cn
Tel: +86 24 25162854

Europe Branch

Email: blt.europe@bltcn.cn
Tel: +86 24 25162782

Southeast Asia Branch

Email: blt.asia@bltcn.cn
Blt.asean@bltelevator.com
Tel: +86 24 25162848

Brilliant Elevator(Singapore) Pte. Ltd.

Email: blt.sg@bltcn.cn
Tel: +86 24 25162563

BLT Peru S.A.C.

Email: blt.peru@bltcn.cn
Tel: +51 01 3204142

Bolinte(Mongolia) Co., Ltd

Email: blt@yahoo.com
Tel: 00976-99082518

India Branch(South Asia) Bang Ladech

Email: blt.india@bltcn.cn
Tel: +86 24 25162850

South America Branch

Email: blt.southamerica@bltcn.cn
Blt.america@bltcn.cn
Tel: +86 24 25162868

Africa Branch

Email: blt.africa@bltcn.cn
Tel: +86 24 25162875

Central America Branch

Email: blt.centralamerica@bltcn.cn
Tel: +86 24 25162769

Oceania Branch

Email: blt.oceania@bltcn.cn
Tel: +86 24 25162842

Service after sales

Email: blt.service@bltcn.cn
Tel: +86 24 25162952

Middle East Marketing Development

Email: blt.kaifa@bltcn.cn
Tel: +86 24 25162775



SHENYANG YUANDA INTELLECTUAL INDUSTRY GROUP CO., LTD.

Add: No.27, Development Road, Shenyang Economic & Technology
Development Zone, China P.C: 110027
<http://www.bltelevator.com>



BRILLIANT

SHENYANG YUANDA INTELLECTUAL INDUSTRY GROUP CO., LTD.

BRILLIANT ELEVATOR

- Chinese Pride
- Trust by the world



Contents

- 03 / Introduction of CNYD
- 04 / Introduction of Shenyang Yuanda Intellectual Industry Group
- 05 - 06 / Advanced Production Equipment
- 07 / Certification
- 08 - 39/ Car Decoration Design
- 40 - 41 / Passenger Elevator (MR)
- 42 - 43/ Passenger Elevator (MRL)
- 44 - 54/ Panoramic Elevator (VS)
- 55 - 58/ Freight Elevator (FS)
- 59 - 63 / Bed Elevator (BS)
- 64 - 65 / Elevator Function
- 66 / Global Marketing Network



YUANDA GROUP

Shenyang Yuanda Enterprise Group (hereinafter referred to as "Yuanda Group" or "Yuanda"), established in 1993, was a high-end and comprehensive high-tech enterprise, and now it has developed into a large-sized enterprise group supported by Intelligent Construction Industry, Intelligent Industry, Intelligent Agriculture, Scientific and Technological Industry, and Financial investment. And make two companies successfully go to public.

In the field of intelligent construction industry, Yuanda mainly focuses on developing curtain wall and industrial housing.

In the field of intelligent industry, Yuanda focuses on developing elevator manufacturing, frequency conversion, energy-saving motor, wind-power generator, and industrial robot.

In the field of intelligent agriculture, Yuanda focuses on developing intelligent dripping system, precision irrigation facilities, and agricultural machinery manufacturing.

In the field of scientific and technological industry, Yuanda focuses on developing industrial robot, high-power ultrasonic application, vibration engineering application, system simulation, industrial engineering, and realizing the industrial information.

In the field of financial investment, relying on China's "One Belt, One Road" strategy, Yuanda is dedicated to new energy business, finance and investment, trade and product agency, and the global resource integration.

SHENYANG YUANDA INTELLECTUAL INDUSTRY GROUP CO., LTD (BLT ELEVATOR)

Shenyang Yuanda Intellectual Industry Group Co. Ltd (002689.SZ) is found in September, 2001, a professional elevator manufacturer engaged in the developing, designing, manufacturing, selling, installation, and after-sales service of complete elevator products. BLT has passed ISO9001:2008 Quality System Certificate, ISO14001 Certificate of Environment Management System and GB/T28001 Occupational Health and Safety Management System Certificate. In addition, BLT products have all obtained the CE certification of EU, GOST certification of Russia and CSA certificate of North America.

In 2010, the company built the Elevator Industrial Park in Shenyang west industry corridor for international management. The factory covers an area of 480 thousand square meters. This is the world important developing and manufacturing base of elevator. After years of effort, BLT has set up more than 220 sales service branches both at home and abroad, 5 wholly-owned subsidiaries and one joint-stock subsidiary in Australia, India, Singapore, Mongolia, Peru, building a worldwide sales service network and providing "lifelong" after-sale experience for every customer with its professional, high-qualified, fast and convenient service.

The company owns modern R&D center. The 177 meters high elevator test tower in the center of the factory is currently the highest one in China, with 11 test shafts, and a 10m/s high speed elevator technological test being feasible. The completed test and inspection center owns 12 libraries, one trial factory, and is equipped with 77 sets of advanced test/inspection devices. Besides, all the kinds of performance tests of complete elevators and components can be carried out in the center, which provides advanced, scientific and powerful guarantee for the research, development and stabilization of products.



26 thousand square meters large single workshop (multiple)

GLOBAL LEADER IN PRODUCTION EQUIPMENT



AMADA EMK3510NT turret punch



AMADA VIPROS - 357Q Numerically Controlled Turret Punch Press



AMADA Flying Optics Laser Machine FO - 3015



TRUMATIC L 3030, TRUMPF, Germany



Horizontal Machining Center



Tunnel type ultrasonic cleaning machine



Numerical Control Vertical turning flexible manufacturing cell



Salvagnini 's(S4+P4) Complete and Flexible Sheet Metal Product Lines, Italy(two)

CERTIFICATION

BLT have the ability to manufacture and meet:

- GB 7588
- EN81 - 20/50 EN81 - 72
- AS1735
- AS/NZS 1735.18
- SS550
- ГОСТ P 53780 - 2010

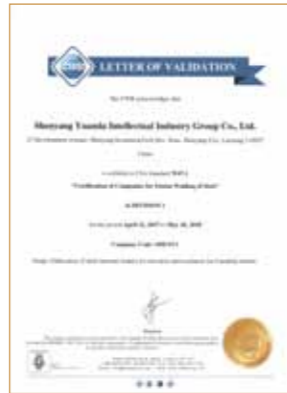
- Ukrainian National Standard
- Argentine National Standard
- Kuwait Regional Standard
- Indian National Standard
- Malaysian National Standard
- And other passenger elevators that meet the requirements of the local special area



Certificate of Quality Management System Certification



CNAS



CWB



CSA



EN81 - 20/50
(Machine Room Passenger Lift)



EN81 - 20/50
(Machine Roomless Passenger Lift)



EAC



KC



Singapore PSB Certification



Ukrainian Certification



Energy Efficiency Certification



Environmental Management System Certification



FBLT BRILLIANT

DECORATION AND DESIGN



PASSENGER ELEVATOR CAR



K272



| | |
|---------------------|--|
| Car ceiling | PS009, Painted steel sheet RAL7047, LED down light |
| | Special arrangement of vents |
| Car front wall | Painted steel sheet RAL7047 |
| Car door | Painted steel sheet RAL7047 |
| Car three-side wall | Painted steel sheet RAL7047 |

Computer graphics may be slightly different from the physical products.

PASSENGER ELEVATOR CAR



K273



| | |
|----------------|--|
| Car ceiling | PD057, Hairline finished stainless steel, LED down light |
| Car front wall | Hairline finished stainless steel |
| Car door | Hairline finished stainless steel |
| Car side wall | Hairline finished stainless steel |
| Car rear wall | Hairline finished stainless steel |

Computer graphics may be slightly different from the physical products.

PASSENGER ELEVATOR CAR

PASSENGER ELEVATOR CAR

K274

K275



| | |
|---------------------|---|
| Car ceiling | PS009, Hairline finished stainless steel, LED down light, Special arrangement of vents |
| Car front wall | Hairline finished stainless steel |
| Car door | Hairline finished stainless steel |
| Car three-side wall | Hairline finished stainless steel |

| | |
|---------------------|--|
| Car ceiling | PD134, Hairline finished stainless steel |
| Car front wall | Hairline finished stainless steel |
| Car door | Hairline finished stainless steel |
| Car three-side wall | Hairline finished stainless steel |

Computer graphics may be slightly different from the physical products.

Computer graphics may be slightly different from the physical products.

PASSENGER ELEVATOR CAR



K276



| | |
|----------------|--|
| Car ceiling | PD060, Mirror finished stainless steel |
| | Acrylic lighting, Down light |
| Car front wall | Mirror finished stainless steel |
| Car side wall | Mirror etched stainless steel MSK-001, Mirror stainless |
| Car rear wall | Mirror etched stainless steel MSK-001, Mirror stainless |
| Car door | Mirror etched stainless steel MSK-001 |

Computer graphics may be slightly different from the physical products.

PASSENGER ELEVATOR CAR



K277



| | |
|----------------|---|
| Car ceiling | PD057, Hairline finished stainless steel |
| Car front wall | Bead blast Etching |
| Car side wall | Bead blast Etching |
| Car door | Glass with hairline finished stainless steel frame |
| Car rear wall | Glass with hairline finished stainless steel frame |

Computer graphics may be slightly different from the physical products.

PASSENGER ELEVATOR CAR

PASSENGER ELEVATOR CAR



K278



K279



| | |
|----------------|---|
| Car ceiling | PD013, Mirror finished stainless steel Acrylic lighting |
| Car front wall | Hairline finished stainless steel |
| Car side wall | Hairline finished stainless steel, Mirror etched stainless steel |
| Car rear wall | Hairline finished stainless steel, Mirror etched stainless steel |
| Car door | Mirror etched stainless steel |

| | |
|----------------|---|
| Car ceiling | PD060, Hairline finished stainless steel, Acrylic lighting, Down light |
| Car front wall | Hairline finished stainless steel |
| Car side wall | Hairline finished stainless steel, Mirror etched stainless steel |
| Car rear wall | Hairline finished stainless steel, Mirror etched stainless steel |
| Car door | Mirror finished stainless steel |

Computer graphics may be slightly different from the physical products.

Computer graphics may be slightly different from the physical products.

PASSENGER ELEVATOR CAR

PASSENGER ELEVATOR CAR

K280



| | |
|----------------|---|
| Car ceiling | PD060, Hairline finished stainless steel |
| Car front wall | Hairline finished stainless steel |
| Car side wall | Hairline finished stainless steel |
| Car door | Hairline finished stainless steel |
| Car rear wall | Hairline finished stainless steel with half - height mirror |

Computer graphics may be slightly different from the physical products.

K281



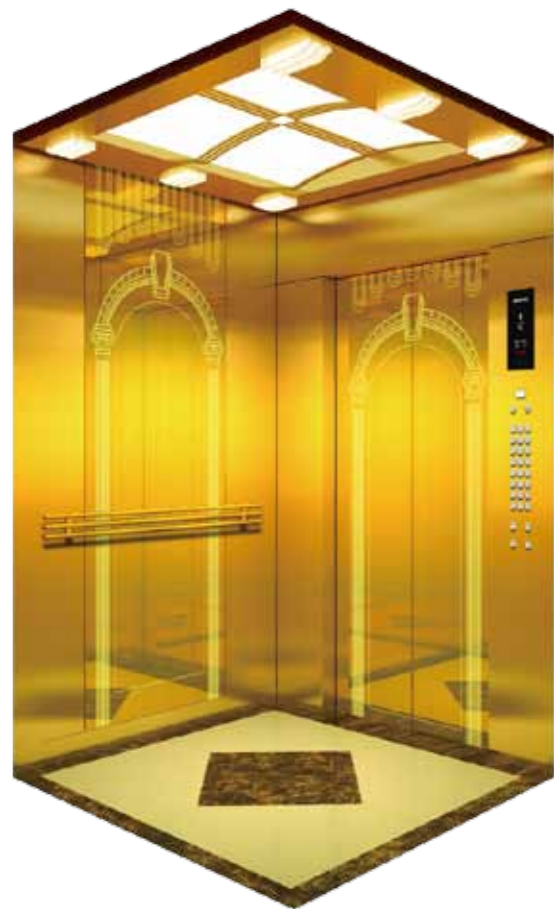
| | |
|----------------|--|
| Car ceiling | PD057, Titanium golden mirror stainless steel |
| Car front wall | Titanium golden mirror stainless steel |
| Car side wall | Titanium golden mirror stainless steel, Titanium golden mirror etching |
| Car rear wall | Titanium golden mirror stainless steel, Titanium golden mirror etching |
| Car door | Titanium golden mirror stainless steel |

Computer graphics may be slightly different from the physical products.

PASSENGER ELEVATOR CAR

PASSENGER ELEVATOR CAR

K282



| | |
|----------------|---|
| Car ceiling | PD013, Titanium golden Hairline finished stainless steel |
| Car front wall | Titanium golden Hairline finished stainless steel |
| Car side wall | Titanium golden Hairline finished stainless steel, Titanium mirror etched |
| Car rear wall | Titanium golden Hairline finished stainless steel, Titanium mirror etched |
| Car door | Titanium golden mirror etched |

Computer graphics may be slightly different from the physical products.

K283



| | |
|----------------|--|
| Car ceiling | PD131, Zirconium golden mirror stainless steel |
| Car front wall | Zirconium golden hairline finished stainless steel |
| Car side wall | Zirconium golden hairline finished stainless steel, Zirconium mirror etched MSK001 |
| Car rear wall | Zirconium golden hairline finished stainless steel, Zirconium mirror etched |
| Car door | Zirconium golden mirror stainless steel |

Computer graphics may be slightly different from the physical products.

PASSENGER ELEVATOR CAR

PASSENGER ELEVATOR CAR



K284



K285

| | |
|----------------|--|
| Car ceiling | PD127,Rose golden mirror stainless steel |
| | LED down light |
| Car front wall | Rose golden hairline finished stainless steel |
| Car side wall | Rose golden hairline etched stainless steel MFW - 003 |
| Car rear wall | Rose golden hairline finished stainless steel |
| Car door | Rose golden mirror stainless steel |



| | |
|----------------|--|
| Car ceiling | PD060,Titanium black mirror stainless steel,Acrylic light |
| Car front wall | Titanium black mirror stainless steel |
| Car side wall | Titanium black mirror stainless steel, Titanium black mirror etched stainless steel |
| Car rear wall | Titanium black mirror stainless steel, Titanium black mirror etched stainless steel |
| Car door | Titanium black mirror etched stainless steel |



Computer graphics may be slightly different from the physical products.

Computer graphics may be slightly different from the physical products.

PASSENGER ELEVATOR CAR

PASSENGER ELEVATOR CAR



K286

| | |
|----------------|---|
| Car ceiling | PD125, Mirror stainless steel, LED Acrylic light |
| Car front wall | Titanium black hairline finished stainless steel |
| Car side wall | Titanium black mirror etched stainless steel MJM - 004, mirror stainless steel |
| Car rear wall | Titanium black mirror etched stainless steel MJM - 004 , mirror stainless steel |
| Car door | Mirror stainless steel |



Computer graphics may be slightly different from the physical products.



K269

| | |
|----------------|---|
| Car ceiling | PS010, Painted steel sheet 5024, LED crystal ceiling light, special arrangement of vents |
| Car front wall | Hairline finished stainless steel |
| Car door | Hairline finished stainless steel |
| Car side wall | Painted steel sheet RAL7047 |
| Car rear wall | Painted steel sheet RAL7047+Mirror stainless steel(only two car walls are behind, the material is mirror stainless steel) |



Computer graphics may be slightly different from the physical products.

PASSENGER ELEVATOR CAR



K289



| | |
|----------------|--|
| Car ceiling | PD136, Rose golden mirror stainless steel, acrylic lighting, acrylic crystal lighting |
| Car front wall | Rose golden hairline finished stainless steel |
| Car door | Rose golden mirror stainless steel |
| Car side wall | Rose golden mirror stainless steel, rose golden hairline etched(MSK - 141) stainless steel |
| Car rearwall | Rose golden mirror etched stainless steel(MSK - 143),rose golden hairline stainless steel |

Computer graphics may be slightly different from the physical products.

PASSENGER ELEVATOR CAR



K290



| | |
|----------------|--|
| Car ceiling | PS015, hairline finished stainless steel, transparent square LED ceiling light |
| Car front wall | Mirror stainless steel |
| Car door | Sandblasted stainless steel |
| Car side wall | Sandblasted stainless steel |
| Car rear wall | Sandblasted stainless steel, mirror stainless steel |

Computer graphics may be slightly different from the physical products.

PASSENGER ELEVATOR CAR



K291



| | |
|----------------|---|
| Car ceiling | PD137, Bronze mirror stainless steel, screen printing acrylic lighting, crystal ceiling light |
| Car front wall | Bronze mirror stainless steel |
| Car door | Bronze mirror stainless steel |
| Car side wall | Bronze mirror stainless steel, bronze hairline etched stainless steel(MSK - 142) |
| Car rear wall | Bronze hairline etched stainless steel, special stainless steel |

Computer graphics may be slightly different from the physical products.

PASSENGER ELEVATOR CAR



K292



| | |
|---------------------|---|
| Car ceiling | PD138(only suitable for K292 decoration), Painted steel sheet RAL9003,the middle area is hollow out, vignetting |
| Car front wall | Hairline stainless steel |
| Car door | Mirror stainless steel |
| Car three-side wall | Mirror stainless steel, hairline finished stainless steel |

Computer graphics may be slightly different from the physical products.

CEILING DESIGN



PS009
Painted Steel or Stainless Steel



PS010
Painted Steel or Stainless Steel



PS014
Painted Steel or Stainless Steel



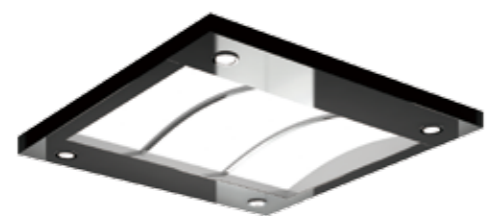
PS015
Painted Steel or Stainless Steel



PD015
Painted Steel or Stainless Steel
(Emergency Exit Available)



PD057
Painted Steel or Stainless Steel
(Emergency Exit Available)



PD060
Painted Steel or Stainless Steel
(Emergency Exit Available)



PD121
Painted Steel or Stainless Steel

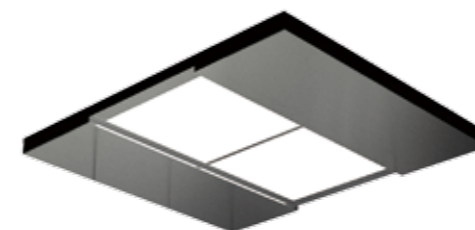


PD131
Painted Steel or Stainless Steel



PD134
Stainless steel

CEILING DESIGN



PD125
Painted Steel or Stainless Steel



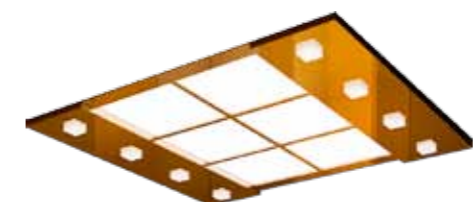
PD126
Painted Steel or Stainless Steel



PD127
Painted Steel or Stainless Steel



PD128
Painted Steel or Stainless Steel
(Emergency Exit Available)



PD136
Painted Steel or Stainless Steel

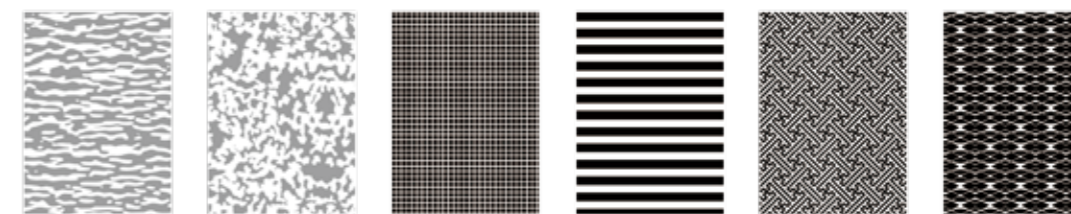


PD137
Painted Steel or Stainless Steel

MATERIAL DESIGN



MSK - 001 MSK - 002 MSK - 006 MSK - 007 MSK - 008 MSK - 009 MSK - 010



MSK - 011 MSK - 012 MJM - 004 MJM - 005 MJM - 006 MJM - 007

CAR FLOOR DESIGN



FSJ - 001
Resin quartz floor



FSJ - 002
Resin quartz floor



FSJ - 003
Resin quartz floor



FSJ - 004
Resin quartz floor



FSJ - 005
Resin quartz floor



FSJ - 006
Resin quartz floor



FSJ - 007
Resin quartz floor



FSJ - 008
Resin quartz floor



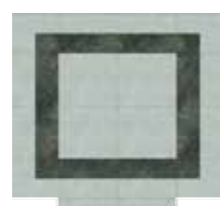
SJ - 004
Resin quartz floor



SJ - 024
Resin quartz floor



SJ - 025
Resin quartz floor



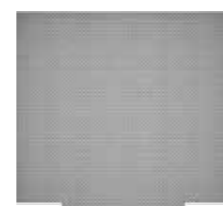
SJ - 026
Resin quartz floor



MA - 018
Resin quartz floor



MA - 025
Resin quartz floor



Patterned Steel Sheet Floor
(Painted Steel/
Hairline Stainless Steel)



DLS - 012
Marble Floor



DLS - 013
Marble Floor



DLS - 029
Marble Floor



DLS - 030
Marble Floor



DLS - 110
Aluminum Honeycomb
Marble Floor

HANDRAIL DESIGN



BLT - H005
(Mirror stainless steel)



BLT - H006
(Mirror stainless steel+Acrylic+gloden titanium mirror stainless steel)



BLT - H007
(Mirror stainless steel)



BLT - H009
(Hairline stainless steel)



BLT - H011
(Stainless steel)



BLT - H012
(Mirror stainless steel+sand blasting stainless steel)



BLT - H113
(Mirror stainless steel)



BLT - H112
(Painted RAL9003)



BLT - H120
(Hairline stainless steel)

COP DESIGN

Integrated COP



C197Y
(Segment LED)

C205Y
(7" Segment LCD)

C206Y
(8" True color LCD)



8" True color LCD
(Customized to 10-inch Size)

COP DESIGN

Separated COP



C195Q
(Segment LED)

C201Q
(7" Segment LCD)

C203Q
(7" True color LCD)

C106Q
(7" Segment LCD)

C107Q
(7" Segment LCD)

C137Q
(7" True color LCD)



Each COP type can be equipped with these 4 types button.

HANDICAP FEATURED COP

Wall Mounted Type



C178G

Wall Embedded Type



C178G - GJ

WALL MOUNTED TYPE HOP



H208A

H211A

Mirror stainless steel finishing is available for this HOP type; Only round button, braille or non - braille type, can be used on the HOP. Duplex model is not available.



H209A

H209AB

Round or Square button, either with or without braille, is available for choosing.



H182A

H182AB

Round or Square button, either with or without braille, is available for choosing(True color LCD).

WALL EMBEDED TYPE HOP



H118A

H118AB

H119A

H119AB

H234A

H235A

HBG306

Round or Square button, either with or without braille, is available for choosing(5" Segment LCD).

COP AND HOP PACKAGES

BCG401 Series: Satin finish silver or elegant black tempered glass panel.



BCG401



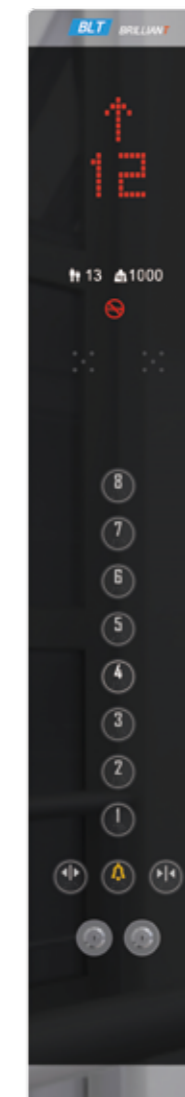
BZGCM001



BXGDM007



BXBCM001



BCG401



BZGCM001



BXGDM007



BXBCM001

Note:Maximum floor number of the above two COP type is 16.

HALL CALL



H124C Wall Mounted Hall Call
HB306 Wall Embedded Hall Call

Round or Square button, either with or without braille, is available for choosing.

FIREMANS SWITCH BOX



HF004 HF300 HF330

Mirror and Hairline stainless steel options

WALL EMBEDDED INDICATORS



Wall Embedded Indicators



19" True color LCD



28" True color LCD



38" True color LCD

The Four indicators above can be COP indicators and Hall call indicators

HALL LANTERN

Wall Mounted



HD020 HD021 HD022 HD023

Wall Embedded



HD017 HD018 HD019 HD010 BFK212

WALL MOUNTED INDICATORS



H137G (Segment LCD)



H130G (True color LCD)

DOOR JAMB AND LANDING DOOR



Painted steel/ stainless steel narrow door jamb



Wide door jamb



Big door jamb



Framed glass door
(Standard ground glass with screen printing. Optional transparent glass.)



TECHNOLOGY LEADS THE MARKET
SERVICE CREATES VALUE

FBLT BRILLIANT

PASSENGER ELEVATOR(MR)



TECHNICAL DATA

| Load (kg) | Speed (m/s) | Car dimension (width x depth x height) | Door dimension (width x height) | Hoistway dimension (width x depth) | Overhead height | Pit depth |
|-------------|---------------|--|-----------------------------------|--------------------------------------|-----------------|-----------|
| 400 | 1 | 1000 x 1000 x 2300 | CO 700 x 2100 | 1550 x 1525 | 4100 | 1300 |
| | 1.6 | | | | 4200 | 1400 |
| | 1.75 | | | | 4250 | 1450 |
| 450 | 1 | 1000 x 1250 x 2300 | CO 700 x 2100 | 1550 x 1775 | 4100 | 1300 |
| | 1.6 | | | | 4200 | 1400 |
| | 1.75 | | | | 4250 | 1450 |
| 450 | 1 | 1250 x 1000 x 2300 | CO 700 x 2100 | 1650 x 1525 | 4100 | 1300 |
| | 1.6 | | | | 4200 | 1400 |
| | 1.75 | | | | 4250 | 1450 |
| 630 | 1 | 1400 x 1100 x 2300 | CO 800 x 2100 | 1850 x 1700 | 3950 | 1200 |
| | 1.6 | | | | 4100 | 1300 |
| | 1.75 | | | | 4150 | 1350 |
| 800 | 1 | 1350 x 1400 x 2300 | CO 800 x 2100 | 1800 x 2000 | 3950 | 1200 |
| | 1.6 | | | | 4100 | 1300 |
| | 1.75 | | | | 4150 | 1350 |
| | 2 | | | | 4300 | 1550 |
| | 2.5 | | | | 4650 | 1650 |
| 800 | 1 | 1400 x 1350 x 2300 | CO 800 x 2100 | 1850 x 1950 | 3950 | 1200 |
| | 1.6 | | | | 4100 | 1300 |
| | 1.75 | | | | 4150 | 1350 |
| | 2 | | | | 4300 | 1550 |
| | 2.5 | | | | 4650 | 1650 |
| 900 | 1 | 1600 x 1350 x 2300 | CO 900/1000 x 2100 | 2050/2200 x 1950 | 3950 | 1200 |
| | 1.6 | | | | 4100 | 1300 |
| | 1.75 | | | | 4150 | 1350 |
| | 2 | | | | 4300 | 1550 |
| | 2.5 | | | | 4650 | 1650 |
| 1000 | 1 | 1500 x 1500 x 2300 | CO 900 x 2100 | 2000 x 2100 | 3950 | 1200 |
| | 1.6 | | | | 4100 | 1300 |
| | 1.75 | | | | 4150 | 1350 |
| | 2 | | | | 4300 | 1550 |
| | 2.5 | | | | 4650 | 1650 |
| 1000 | 1 | 1600 x 1400 x 2300 | CO 900/1000 x 2100 | 2050/2200 x 2000 | 3950 | 1200 |
| | 1.6 | | | | 4100 | 1300 |
| | 1.75 | | | | 4150 | 1350 |
| | 2 | | | | 4300 | 1550 |
| | 2.5 | | | | 4650 | 1650 |
| 1000 | 1 | 1100 x 2100 x 2300 | CO 900 x 2100 | 2000 x 2500 | 3950 | 1200 |
| | 1.6 | | | | 4100 | 1300 |
| | 1.75 | | | | 4150 | 1350 |
| | 2 | | | | 4300 | 1550 |
| | 2.5 | | | | 4650 | 1650 |
| 1000 | 1 | 2100 x 1100 x 2300 | CO 1100 x 2100 | 2600 x 1700 | 3950 | 1200 |
| | 1.6 | | | | 4100 | 1300 |
| | 1.75 | | | | 4150 | 1350 |
| | 2 | | | | 4300 | 1550 |
| | 2.5 | | | | 4650 | 1650 |
| 1150 | 1 | 1800 x 1450 x 2300 | CO 1000 x 2100 | 2300 x 2050 | 4400 | 1450 |
| | 1.6 | | | | 4550 | 1550 |
| | 1.75 | | | | 4650 | 1650 |
| | 2 | | | | 4700 | 1650 |
| | 2.5 | | | | 4900 | 1800 |
| 1275 | 1 | 2000 x 1400 x 2450 | CO 1100 x 2100 | 2600 x 2100 | 4400 | 1450 |
| | 1.6 | | | | 4550 | 1550 |
| | 1.75 | | | | 4650 | 1600 |
| | 2 | | | | 4700 | 1650 |
| | 2.5 | | | | 4900 | 1800 |
| 1350 | 1 | 2000 x 1500 x 2450 | CO 1100 x 2100 | 2600 x 2200 | 4400 | 1450 |
| | 1.6 | | | | 4550 | 1550 |
| | 1.75 | | | | 4650 | 1600 |
| | 2 | | | | 4700 | 1650 |
| | 2.5 | | | | 4900 | 1800 |
| 1600 | 1 | 2000 x 1750 x 2450 | CO 1100 x 2100 | 2600 x 2450 | 4400 | 1450 |
| | 1.6 | | | | 4550 | 1550 |
| | 1.75 | | | | 4650 | 1600 |
| | 2 | | | | 4700 | 1650 |
| | 2.5 | | | | 4900 | 1800 |



FBLT BRILLIANT

PASSENGER ELEVATOR(MRL)



TECHNICAL DATA

| Load (kg) | Speed (m/s) | Car dimension (width x depth x height) | Door dimension (width x height) | Hoistway dimension (width x depth) | Overhead height | Pit depth |
|-------------|---------------|--|-----------------------------------|--------------------------------------|-----------------|-----------|
| 400 | 1 | 1000 x 1000 x 2300 | CO 700 x 2100 | 1550 x 1450 | 4000 | 1200 |
| | 1.6 | | | | 4150 | 1300 |
| | 1.75 | | | | 4200 | 1350 |
| 400 | 1 | 1000 x 1000 x 2300 | 2S 800 x 2100 | 1550 x 1500 | 4000 | 1200 |
| | 1.6 | | | | 4150 | 1300 |
| | 1.75 | | | | 4200 | 1350 |
| 450 | 1 | 1000 x 1250 x 2300 | CO 700 x 2100 | 1550 x 1600 | 4000 | 1200 |
| | 1.6 | | | | 4150 | 1300 |
| | 1.75 | | | | 4200 | 1350 |
| 450 | 1 | 1000 x 1250 x 2300 | 2S 800 x 2100 | 1550 x 1700 | 4000 | 1200 |
| | 1.6 | | | | 4150 | 1300 |
| | 1.75 | | | | 4200 | 1350 |
| 630 | 1 | 1100 x 1400 x 2300 | CO 800 x 2100 | 1835 x 1750 | 3850 | 1200 |
| | 1.6 | | | | 4000 | 1350 |
| | 1.75 | | | | 4050 | 1350 |
| 800 | 1 | 1350 x 1400 x 2300 | CO 800 x 2100 | 1960 x 1750 | 4200 | 1450 |
| | 1.6 | | | | 3850 | 1200 |
| | 1.75 | | | | 4000 | 1350 |
| 1000 | 1 | 1600 x 1400 x 2300 | CO 900 x 2100 | 2185 x 1750 | 4050 | 1350 |
| | 1.6 | | | | 4200 | 1450 |
| | 1.75 | | | | 4200 | 1450 |
| 1000 | 1 | 1100 x 2100 x 2300 | CO 900 x 2100 | 2000 x 2450 | 4000 | 1350 |
| | 1.6 | | | | 4050 | 1350 |
| | 1.75 | | | | 4200 | 1450 |
| 1150 | 1 | 1700 x 1500 x 2300 | CO 1000 x 2100 | 2450 x 2000 | 4150 | 1200 |
| | 1.6 | | | | 4300 | 1350 |
| | 1.75 | | | | 4350 | 1350 |
| 1150 | 1 | 1800 x 1450 x 2300 | CO 1000 x 2100 | 2500 x 2000 | 4450 | 1450 |
| | 1.6 | | | | 4150 | 1200 |
| | 1.75 | | | | 4300 | 1350 |
| 1275 | 1 | 1400 x 2000 x 2300 | CO 1000 x 2100 | 2300 x 2400 | 4350 | 1350 |
| | 1.6 | | | | 4450 | 1450 |
| | 1.75 | | | | 4150 | 1200 |
| 1350 | 1 | 1500 x 2000 x 2300 | CO 1000 x 2100 | 2350 x 2400 | 4300 | 1350 |
| | 1.6 | | | | 4350 | 1350 |
| | 1.75 | | | | 4450 | 1450 |
| 1350 | 1 | 2000 x 1500 x 2300 | CO 1100 x 2100 | 2700 x 2000 | 4150 | 1200 |
| | 1.6 | | | | 4300 | 1350 |
| | 1.75 | | | | 4350 | 1350 |
| 1600 | 1 | 1750 x 2000 x 2300 | CO 1100 x 2100 | 2590 x 2400 | 4450 | 1450 |
| | 1.6 | | | | 4150 | 1200 |
| | 1.75 | | | | 4300 | 1350 |
| 1600 | 1 | 2100 x 1600 x 2300 | CO 1100 x 2100 | 2845 x 2050 | 4400 | 1400 |
| | 1.6 | | | | 4450 | 1450 |
| | 1.75 | | | | 4150 | 1200 |
| | 1 | | | | 4300 | 1350 |
| | 1.6 | | | | 4400 | 1400 |
| | 1.75 | | | | 4450 | 1450 |
| | 1 | | | | 4150 | 1200 |
| | 1.6 | | | | 4300 | 1350 |
| | 1.75 | | | | 4400 | 1400 |
| | 1 | | | | 4450 | 1450 |
| | 1.6 | | | | 4150 | 1200 |
| | 1.75 | | | | 4300 | 1350 |
| | 1 | | | | 4400 | 1400 |
| | 1.6 | | | | 4450 | 1450 |
| | 1.75 | | | | 4150 | 1200 |
| | 1 | | | | 4300 | 1350 |
| | 1.6 | | | | 4400 | 1400 |
| | 1.75 | | | | 4450 | 1450 |



FBLT BRILLIANT

PANORAMIC ELEVATOR(VS)



PANORAMIC DESIGN



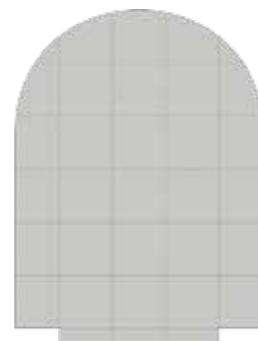
PD021

Standard: Baked enamel steel sheet GH2030, Organic Glass, Down light, Translucent Plate



H014

(Stainless Steel Handrail)



SJ013

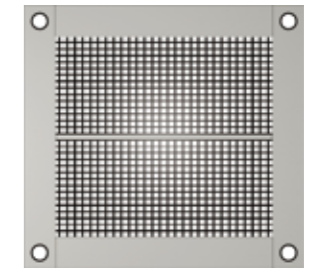
(Resin quartz floor)

G002A (Standard)

| | |
|----------------------|--|
| Car glass | Clear laminated safety glass |
| Top/bottom shrouding | Baked enamel steel sheet GH2031 |
| Car ceiling | Ceiling type:PD021 |
| | (Center) Translucent plate |
| | (Sides) Baked enamel steel sheet GH2030,down light |
| Ventilation | Car ceiling side vents |
| Car wall | Hairline finished stainless steel |
| Car door | Hairline finished stainless steel |
| Floor | Resin quartz floor SJ -013 |
| Handrail | Stainless steel tube H014 |
| COP | Separated control panel |

Note: The above specification is the standard design.
For other choice is non - standard.

PANORAMIC DESIGN



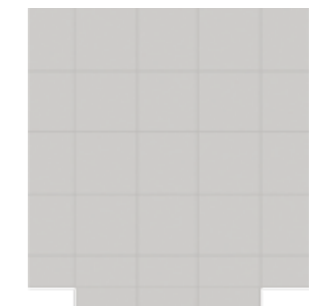
PD022

Standard: Baked enamel steel sheet GH2030, Down light, Translucent plate



H015

(Stainless Steel Handrail)



SJ-011

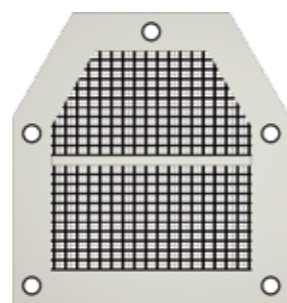
(Resin quartz floor)

G012A (Standard)

| | |
|----------------------|---|
| Car glass | Clear laminated safety glass |
| Top/bottom shrouding | Baked enamel steel sheet GH4024 |
| Car ceiling | Ceiling type:PD022 |
| | (Center) Translucent plate |
| | (Sides) Baked enamel steel sheet GH2030 |
| Ventilation | Car ceiling side vents |
| Car wall | Hairline Stainless Steel |
| Car door | Hairline Stainless Steel |
| Floor | Resin quartz floor SJ -011 |
| Handrail | Stainless steel H015 |
| COP | Separated control panel |

Note: The above specification is the standard design.
For other choice is non - standard.

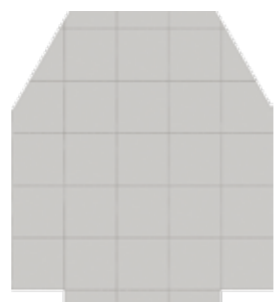
PANORAMIC DESIGN



PD020
Standard: Baked enamel steel sheet GH2030. Down light, Translucent Plate.



H013
(Stainless steel Handrail)



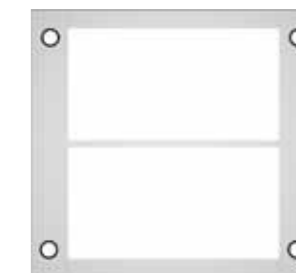
SJ-012
(Resin quartz floor)

G011A (Standard)

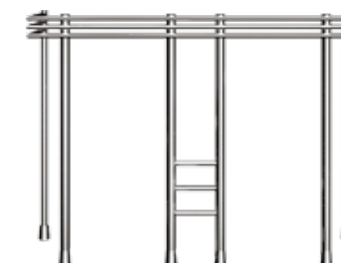
| | |
|----------------------|---|
| Car glass | Clear laminated safety glass |
| Top/bottom shrouding | Arc-shaped Baked enamel steel sheet GH2031 Double row of lamps |
| Car ceiling | Ceiling type:PD020 (Center) Translucent plate (Sides) Baked enamel steel sheet GH2030 |
| Ventilation | Car ceiling side vents |
| Car wall | Hairline finished stainless steel |
| Car door | Hairline finished stainless steel |
| Floor | Resin quartz floor SJ-012 |
| Handrail | Stainless steel tube H013 |
| COP | Separated control panel |

Note: The above specification is the standard design.
For other choice is non-standard.

PANORAMIC DESIGN



PD023
Standard: Baked enamel steel sheet GH2030.
White Acrylic Plate, Down light;



H016 (Stainless steel Handrail)



SJ-011
(Resin quartz floor)

G013A (Standard)

| | |
|----------------------|--|
| Car glass | Clear laminated safety glass |
| Top/bottom shrouding | Arc-shaped Baked enamel steel sheet GG6037 |
| Car ceiling | Ceiling type:PD023 (Center) White acrylic plate (Sides) Baked enamel steel sheet GH2030,Downlights |
| Ventilation | Car ceiling side vents |
| Car wall | Hairline finished stainless steel |
| Car door | Hairline finished stainless steel |
| Floor | Resin quartz floor SJ-011 |
| Handrail | Stainless steel tube H016 |
| COP | Separated control panel |

Note: The above specification is the standard design.
For other choice is non-standard.

PANORAMIC DESIGN

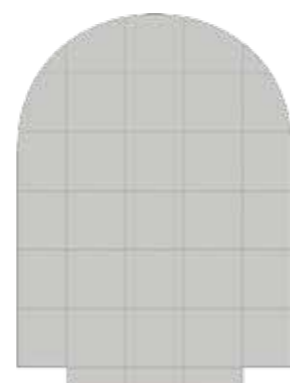


PD026

Standard: Baked enamel steel sheet
GH2030, White Acrylic Plate, Down light;



H014(Stainless Steel Handrail)



SJ-013(Resin quartz floor)

G016A

| | |
|----------------------|---|
| Car glass | 180 ° bending semi - circle clear laminated safety glass |
| Top/bottom shrouding | Baked enamel steel GG6007 |
| Car ceiling | Ceiling type:PD026 |
| | Material: (center) white acrylic plate (side) Baked enamel steel sheet GH2030, Downlight |
| Ventilation | Two sides vents of car ceiling |
| Car wall | Hairline stainless steel |
| Car door | Hairline stainless steel |
| Floor | SJ - 013(Standard) |
| Handrail | Hairline stainless steel (H014) |
| COP | Separated control panel |

Note: The above specification is the standard design.
For other choice is non - standard.

PANORAMIC DESIGN



Ceiling PD129
Hairline stainless steel
Cloud patternplate down light



C193Y



SJ - 011(Resin quartz floor)

G120A Car

| | |
|----------------------|--|
| Top/bottom shrouding | Hairline stainless steel |
| Ceiling | Ceiling type:PD129 |
| | Material: Hairline stainless steel |
| Car wall | Front car wall: Hairline stainlesssteel +Clear laminated safety glass |
| | Side car wall: Clear laminated safety glass+ Hairline stainlesssteel +Clear laminated safety glass |
| | Rear wall: Clear laminated safety glass |
| Car panel | Glass door with hairline stainless steel frame |
| COP | C193Y hairline stainless steel |
| Floor | Resin quartz floor SJ - 011 |
| Handrail | BLT - H114 hairline stainless steel ground handrail |

PANORAMIC DESIGN



Ceiling PD015



hairline stainless steel flat handrail

G121A Car

| | |
|----------------------|---|
| Top/bottom shrouding | Hairline stainless steel |
| Ceiling | Ceiling type:PD015 Material: Hairline stainless steel |
| Car wall | Front car wall: Hairline stainlesssteel Side car wall: Clear laminated safety glass with frame+ Hairline stainlesssteel +Clear laminated safety glass with frame Rear wall: Clear laminated safety glass with Hairline stainlesssteel frame |
| Car door | Hairline stainless steel |
| Floor | Resin quartz floor SJ -011 |
| Handrail | Hairline stainless steel flat handrail |
| COP | Seperated control panel |



SJ-011(Resin quartz floor)

PANORAMIC DESIGN



Ceiling PD015



Hairline stainless steel ground handrail

G122A Car

| | |
|----------------------|---|
| Top/bottom shrouding | Hairline stainless steel |
| Ceiling | Ceiling type: PD015 Material: Hairline stainless steel |
| Car wall | Front car wall: Clear laminated safety glass with Hairline stainlesssteel frame Side car wall: Clear laminated safety glass with frame+ Hairline stainlesssteel +Clear laminated safety glass with frame Rear wall: Clear laminated safety glass with Hairline stainlesssteel frame |
| Car door | Hairline stainless steel (standard) Clear laminated safety glass with Hairline stainlesssteel frame (Optional) |
| Floor | Resin quartz floor SJ -011 |
| Handrail | Hairline stainless steel ground handrail |
| COP | C180Y |



SJ-011(Resin quartz floor)

TECHNICAL PARAMETERS FOR MR PANORAMIC ELEVATOR

| Car type | Load (kg) | Speed (m/s) | Car dimension (width x depth x height) | Door dimension (width x height) | Hoistway dimension (width x depth) | Overhead height | Pit depth |
|----------------|-------------|---------------|--|-----------------------------------|--------------------------------------|-----------------|-----------|
| G002A G016A | 630 | 1 | 1000 x 1650 x 2270 | CO 800 x 2100 | 1960 x 2280 | 3950 | 1500 |
| | | 1.6 | | | | 4050 | 1550 |
| | | 1.75 | | | | 4100 | 1600 |
| G011A | 630 | 1 | 1000 x 1650 x 2270 | CO 800 x 2100 | 1960 x 2230 | 3950 | 1500 |
| | | 1.6 | | | | 4050 | 1550 |
| | | 1.75 | | | | 4100 | 1600 |
| G012A | 630 | 1 | 1000 x 1600 x 2270 | CO 800 x 2100 | 1960 x 2150 | 3950 | 1500 |
| | | 1.6 | | | | 4050 | 1550 |
| | | 1.75 | | | | 4100 | 1600 |
| G013A | 630 | 1 | 1050 x 1500 x 2270 | CO 800 x 2100 | 2000 x 2200 | 3950 | 1500 |
| | | 1.6 | | | | 4050 | 1550 |
| | | 1.75 | | | | 4100 | 1600 |
| G002A G016A | 800 | 1 | 1200 x 1700 x 2270 | CO 800 x 2100 | 2060 x 2280 | 3950 | 1500 |
| | | 1.6 | | | | 4050 | 1550 |
| | | 1.75 | | | | 4100 | 1600 |
| G011A | 800 | 1 | 1200 x 1700 x 2270 | CO 800 x 2100 | 2060 x 2280 | 3950 | 1500 |
| | | 1.6 | | | | 4050 | 1550 |
| | | 1.75 | | | | 4100 | 1600 |
| G012A | 800 | 1 | 1200 x 1600 x 2270 | CO 800 x 2100 | 2060 x 2150 | 3950 | 1500 |
| | | 1.6 | | | | 4050 | 1550 |
| | | 1.75 | | | | 4100 | 1600 |
| G013A | 800 | 1 | 1300 x 1500 x 2270 | CO 800 x 2100 | 2160 x 2200 | 3950 | 1500 |
| | | 1.6 | | | | 4050 | 1550 |
| | | 1.75 | | | | 4100 | 1600 |
| G002A G016A | 1000 | 1 | 1400 x 1800 x 2270 | CO 900 x 2100 | 2260 x 2430 | 3950 | 1500 |
| | | 1.6 | | | | 4050 | 1550 |
| | | 1.75 | | | | 4100 | 1600 |
| G011A | 1000 | 1 | 1400 x 1800 x 2270 | CO 900 x 2100 | 2260 x 2380 | 3950 | 1500 |
| | | 1.6 | | | | 4050 | 1550 |
| | | 1.75 | | | | 4100 | 1600 |
| G012A | 1000 | 1 | 1400 x 1700 x 2270 | CO 900 x 2100 | 2260 x 2260 | 3950 | 1500 |
| | | 1.6 | | | | 4050 | 1550 |
| | | 1.75 | | | | 4100 | 1600 |
| G013A | 1000 | 1 | 1600 x 1500 x 2270 | CO 900 x 2100 | 2460 x 2200 | 3950 | 1500 |
| | | 1.6 | | | | 4050 | 1550 |
| | | 1.75 | | | | 4100 | 1600 |

TECHNICAL PARAMETERS FOR MRL PANORAMIC ELEVATOR

| Car type | Load (kg) | Speed (m/s) | Car dimension (width x depth x height) | Door dimension (width x height) | Hoistway dimension (width x depth) | Overhead height | Pit depth |
|----------------|-------------|---------------|--|-----------------------------------|--------------------------------------|-----------------|-----------|
| G002A G016A | 800 | 1 | 1200 x 1700 x 2270 | CO 800 x 2100 | 2060 x 2280 | 4200 | 1500 |
| | | 1.6 | | | | 4300 | 1550 |
| | | 1.75 | | | | 4350 | 1600 |
| G011A | 800 | 1 | 1200 x 1700 x 2270 | CO 800 x 2100 | 2060 x 2280 | 4200 | 1500 |
| | | 1.6 | | | | 4300 | 1550 |
| | | 1.75 | | | | 4350 | 1600 |
| G012A | 800 | 1 | 1200 x 1600 x 2270 | CO 800 x 2100 | 2060 x 2150 | 4200 | 1500 |
| | | 1.6 | | | | 4300 | 1550 |
| | | 1.75 | | | | 4350 | 1600 |
| G013A | 800 | 1 | 1300 x 1500 x 2270 | CO 800 x 2100 | 2160 x 2200 | 4200 | 1500 |
| | | 1.6 | | | | 4300 | 1550 |
| | | 1.75 | | | | 4350 | 1600 |
| G0120A | 800 | 1 | 1350 x 1400 x 2300 | CO 800 x 2100 | 1950 x 1800 | 4500 | 1300 |
| | | 1.6 | | | | 4600 | 1350 |
| | | 1.75 | | | | 4650 | 1400 |
| G002A G016A | 1000 | 1 | 1400 x 1800 x 2270 | CO 900 x 2100 | 2260 x 2430 | 4200 | 1500 |
| | | 1.6 | | | | 4300 | 1550 |
| | | 1.75 | | | | 4350 | 1600 |
| G011A | 1000 | 1 | 1400 x 1800 x 2270 | CO 900 x 2100 | 2260 x 2380 | 4200 | 1500 |
| | | 1.6 | | | | 4300 | 1550 |
| | | 1.75 | | | | 4350 | 1600 |
| G012A | 1000 | 1 | 1400 x 1700 x 2270 | CO 900 x 2100 | 2260 x 2260 | 4200 | 1500 |
| | | 1.6 | | | | 4300 | 1550 |
| | | 1.75 | | | | 4350 | 1600 |
| G013A | 1000 | 1 | 1600 x 1500 x 2270 | CO 900 x 2100 | 2460 x 2200 | 4200 | 1500 |
| | | 1.6 | | | | 4300 | 1550 |
| | | 1.75 | | | | 4350 | 1600 |
| G0120A | 1000 | 1 | 1600 x 1400 x 2300 | CO 900 x 2100 | 2175 x 1800 | 4500 | 1300 |
| | | 1.6 | | | | 4600 | 1350 |
| | | 1.75 | | | | 4650 | 1400 |
| G0121A | 1000 | 1 | 1600 x 1400 x 2400 | CO 1000 x 2100 | 2275 x 1800 | 4500 | 1300 |
| | | 1.6 | | | | 4600 | 1350 |
| | | 1.75 | | | | 4650 | 1400 |
| G0122A | 1000 | 1 | 1600 x 1400 x 2400 | CO 900 x 2100 | 2175 x 1800 | 4500 | 1300 |
| | | 1.6 | | | | 4600 | 1350 |
| | | 1.75 | | | | 4650 | 1400 |

FREIGHT DESIGN



FBLT BRILLIANT

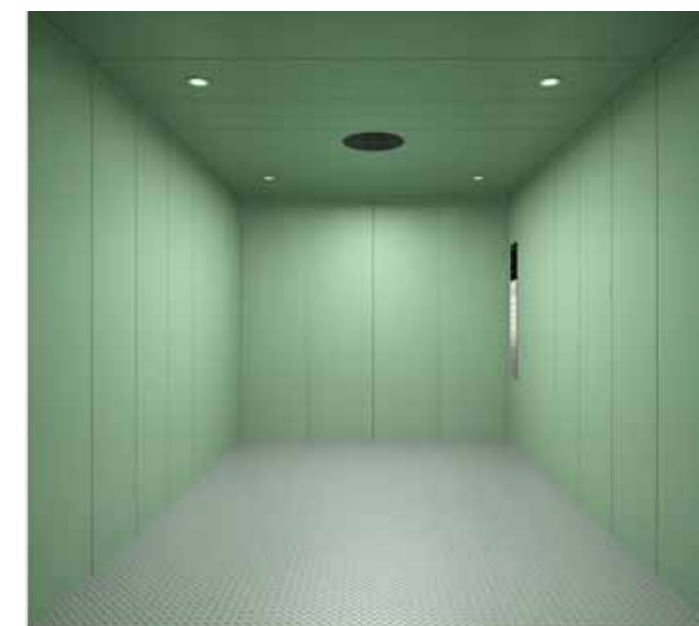
FREIGHT ELEVATOR(FS)



Z003

| | |
|------------------------------|--|
| Car ceiling | PS008 Painted steel, RAL6019 single layer downlight + ventilator |
| Car front wall (if there is) | Painted steel RAL6019 |
| Car door | Painted steel RAL6019 |
| Three side car wall | Painted steel RAL6019; When opening the door in the middle, the control panel is inverted (as shown in the picture); when opening the door from the side, the control panel is in front |
| Operation panel | C195Q, 304 short wire hairline stainless steel panel |
| Floor | Patterned steel sheet |

Note: The above specification is the standard design.
For other choice is non-standard.



FREIGHT DESIGN



Z004

| | |
|---------------------------------|--|
| Car ceiling | PS008 Hairline stainless steel single layer downlight + ventilator |
| Car front wall (if there is) | Hairline stainless steel |
| Car door | Hairline stainless steel |
| Three side car wall | Hairline stainless steel ; When opening the door in the middle, the control panel is inverted (as shown in the picture); when opening the door from the side, the control panel is in front |
| Operation panel | C195Q, 304 short wire hairline stainless steel panel |
| Floor | Patterned steel sheet |

Note: The above specification is the standard design.
For other choice is non - standard.



TECHNICAL PARAMETERS FOR MRL FREIGHT ELEVATOR

| Load (kg) | Speed (m/s) | Car dimension (width × depth × height) | Door dimension (width × height) | Hoistway dimension (width × depth) | Overhead height | Pit depth |
|----------------|------------------|---|--------------------------------------|---|--------------------|-----------|
| 2000 | 0.5 | 1800 × 2200 × 2100(front opening) | 2S 1500 × 2100 | 3050 × 2700 | 4500 | 1700 |
| | 1 | | | | | |
| 2000 | 0.5 | 1800 × 2200 × 2100(opposite door) | 2S 1500 × 2100 | 3050 × 2912 | 4500 | 1700 |
| | 1 | | | | | |
| 3000 | 0.5 | 2200 × 2500 × 2100(front opening) | 4CO 1800 × 2100 | 3500 × 3000 | 4600 | 1700 |
| | 1 | | | | | |
| 3000 | 0.5 | 2200 × 2500 × 2100(opposite door) | 4CO 1800 × 2100 | 3500 × 3212 | 4600 | 1700 |
| | 1 | | | | | |
| 4000 | 0.5 | 2200 × 3300 × 2300(front opening) | 4CO 2200 × 2300 | 3850 × 3700 | 4950 | 1700 |
| | 1 | | | | | |
| 4000 | 0.5 | 2200 × 3300 × 2300(opposite door) | 4CO 2200 × 2300 | 3850 × 3812 | 4950 | 1700 |
| | 1 | | | | | |
| 5000 | 0.5 | 2500 × 3500 × 2300(front opening) | 4CO 2500 × 2300 | 4200 × 3900 | 4950 | 1700 |
| | 0.5 | | | | | |
| 5000 | 0.5 | 2500 × 3500 × 2300(opposite door) | 4CO 2500 × 2300 | 4200 × 4012 | 4950 | 1700 |
| | 0.5 | | | | | |

TECHNICAL PARAMETERS FOR MR (WORM GEAR)FREIGHT ELEVATOR

| Load (kg) | Speed (m/s) | Car dimension (width × depth × height) | Door dimension (width × height) | Hoistway dimension (width × depth) | Overhead height | Pit depth |
|----------------|------------------|---|--------------------------------------|---|--------------------|-----------|
| 2000 | 0.5 | 1800 × 2200 × 2100(front opening) | 2S 1500 × 2100 | 2800 × 2700 | 3950 | 1700 |
| | 1 | | | | | |
| 2000 | 0.5 | 1800 × 2200 × 2100(opposite door) | 2S 1500 × 2100 | 2800 × 2912 | 3950 | 1700 |
| | 1 | | | | | |
| 3000 | 0.5 | 2200 × 2500 × 2100(front opening) | 4CO 1800 × 2100 | 3400 × 3000 | 3950 | 1650 |
| | 1 | | | | | |
| 3000 | 0.5 | 2200 × 2500 × 2100(opposite door) | 4CO 1800 × 2100 | 3400 × 3212 | 3950 | 1650 |
| | 1 | | | | | |
| 5000 | 0.25 | 2500 × 3500 × 2300(front opening) | 4CO 2500 × 2300 | 4050 × 3900 | 4250 | 1750 |
| | 0.5 | | | | | |
| 5000 | 0.25 | 2500 × 3500 × 2300(opposite door) | 4CO 2500 × 2300 | 4050 × 4012 | 4250 | 1750 |
| | 0.5 | | | | | |

BS DESIGN



FBLT BRILLIANT

BED ELEVATOR(BS)



B008

| | |
|-----------------------|--|
| Car ceiling | PS007A, Cream resin lampshade, painted steel sheet RAL1013 |
| Car front wall, door | Painted steel sheet RAL1013 |
| Car three - side wall | Painted steel sheet RAL1013 |
| Handrail | H018 |
| Car floor | Plastic floor SJ - 011 |
| COP | Short silken hairline stainless steel |

Note: The above specification is the standard design.
For other choice is non - standard.



BS DESIGN 

BS DESIGN 



B009

| | |
|-----------------------|--|
| Car ceiling | PD028, hairline finished stainless steel |
| Car front wall | Hairline finished stainless steel |
| Car door | Hairline finished stainless steel |
| Car three - side wall | Hairline finished stainless steel |
| Handrail | H018 |
| Car floor | Plastic floor MA - 025 |
| COP | Short silken hairline stainless steel |

Note: The above specification is the standard design.
For other choice is non - standard.



B010

| | |
|-----------------------|--|
| Car ceiling | PD028, Hairline finished stainless steel |
| Car front wall | Hairline finished stainless steel |
| Car door | Hairline finished stainless steel |
| Car three - side wall | Hairline finished stainless steel |
| Handrail | H113 |
| Car floor | Plastic floor SJ - 025 |
| COP | Short silken hairline stainless steel |

Note: The above specification is the standard design.
For other choice is non - standard.



TECHNICAL DATA

| Load (kg) | Speed (m/s) | Car dimension (width x depth x height) | Door dimension (width x height) | Hoistway dimension (width x depth) | Overhead height | Pit depth |
|-------------|---------------|--|-----------------------------------|--------------------------------------|-----------------|-----------|
| 1600 | 1 | 1400 x 2400 x 2300 | CO 1100 x 2100 | 2450 x 2900 | 3900 | 1350 |
| | 1.5 | | | | 4050 | 1450 |
| | 1.6 | | | | 4050 | 1450 |
| | 1.75 | | | | 4150 | 1550 |
| | 2 | | | | 4200 | 1550 |
| 1600 | 2.5 | 1400 x 2400 x 2300 | 2S 1200 x 2100 | 2400 x 2900 | 4450 | 1800 |
| | 1 | | | | 3900 | 1350 |
| | 1.5 | | | | 4050 | 1450 |
| | 1.6 | | | | 4050 | 1450 |
| | 1.75 | | | | 4150 | 1550 |
| 1600 | 2 | 1400 x 2400 x 2300 | 2S 1300 x 2100 | 2400 x 2900 | 4200 | 1550 |
| | 2.5 | | | | 4450 | 1800 |
| | 1 | | | | 3900 | 1350 |
| | 1.5 | | | | 4050 | 1450 |
| | 1.6 | | | | 4050 | 1450 |
| 1800 | 1.75 | 1500 x 2500 x 2300 | 2S 1300 x 2100 | 2500 x 3100 | 4150 | 1250 |
| | 2 | | | | 4200 | 1550 |
| | 2.5 | | | | 4450 | 1800 |
| | 1 | | | | 4150 | 1250 |
| | 1.5 | | | | 4250 | 1350 |
| 1800 | 1.6 | 1500 x 2500 x 2300 | 2S 1500 x 2100 | 2800 x 3100 | 4250 | 1350 |
| | 1.75 | | | | 4350 | 1400 |
| | 2 | | | | 4450 | 1500 |
| | 2.5 | | | | 4750 | 1850 |
| | 1 | | | | 4150 | 1250 |
| 2000 | 1.5 | 1500 x 2700 x 2300 | 2S 1300 x 2100 | 2500 x 3300 | 4250 | 1350 |
| | 1.6 | | | | 4250 | 1350 |
| | 1.75 | | | | 4350 | 1400 |
| | 2 | | | | 4450 | 1500 |
| | 2.5 | | | | 4750 | 1850 |
| 2000 | 1 | 1500 x 2700 x 2300 | 2S 1500 x 2100 | 2850 x 3300 | 4150 | 1250 |
| | 1.5 | | | | 4250 | 1350 |
| | 1.6 | | | | 4250 | 1350 |
| | 1.75 | | | | 4350 | 1400 |
| | 2 | | | | 4450 | 1500 |
| | 2.5 | | | | 4750 | 1850 |

ELEVATOR STANDARD FUNCTION LIST

| Serial | Passenger and Panoramic Elevator Standard Function | Cargo Elevator Standard Function | Hospital Elevator Standard Function |
|--------|---|---|---|
| 1 | Full collective selective control | Full collective selective control | Full collective selective control |
| 2 | Door open time setting | Door open time setting | Door open time setting |
| 3 | Service floor setting | Service floor setting | Service floor setting |
| 4 | Timing service | Timing service | Timing service |
| 5 | Door pre - close by the door close button | Door pre - close by the door close button | Door pre - close by the door close button |
| 6 | Light curtain protection | Light curtain protection | Light curtain protection |
| 7 | Automatic car light and ventilation fan shut off | Automatic car light and ventilation fan shut off | Automatic car light and ventilation fan shut off |
| 8 | Automatic door open upon door lock abnormality | Automatic door open upon door lock abnormality | Automatic door open upon door lock abnormality |
| 9 | Landing at another floor | Landing at another floor | Landing at another floor |
| 10 | Response and landing during acceleration | Response and landing during acceleration | Response and landing during acceleration |
| 11 | Cancellation of wrong car calls | Cancellation of wrong car calls | Cancellation of wrong car calls |
| 12 | Attendant running | Attendant running | Attendant running |
| 13 | Self - rescue at low speed | Self - rescue at low speed | Self - rescue at low speed |
| 14 | Button stuck diagnosis | Button stuck diagnosis | Button stuck diagnosis |
| 15 | Startup torque automatic compensation | Startup torque automatic compensation | Startup torque automatic compensation |
| 16 | Direct landing | Direct landing | Direct landing |
| 17 | The best curve automatic generation | The best curve automatic generation | The best curve automatic generation |
| 18 | Record of running times | Record of running times | Record of running times |
| 19 | Record of running time | Record of running time | Record of running time |
| 20 | Independent travel(VIP) | Independent travel(VIP) | Independent travel(VIP) |
| 21 | Overload indication | Overload indication | Overload indication |
| 22 | Full load indication | Non - leveling zone protection | Full load indication |
| 23 | Full load bypass | Fault data record | Full load bypass |
| 24 | Electronic weighing | Simple maintenance keypad | Electronic weighing |
| 25 | Non - leveling zone protection | Hoistway self - learning function | Non - leveling zone protection |
| 26 | Fault data record | Inspection running | Fault data record |
| 27 | Simple maintenance keypad | Motor parameters tuning | Simple maintenance keypad |
| 28 | Hoistway self - learning function | Floor position intelligent correction | Hoistway self - learning function |
| 29 | Inspection running | Fire emergency travel | Inspection running |
| 30 | Motor parameters tuning | Fireman service operation | Motor parameters tuning |
| 31 | Floor position intelligent correction | Firefighting " No entry " indication | Floor position intelligent correction |
| 32 | Fire emergency Travel | Firefighting feedback | Fire emergency Travel |
| 33 | Fireman service operation | Fire emergency travel indication | Fireman service operation |
| 34 | Firefighting " No entry " indication | Parking switch | Firefighting " No entry " indication |
| 35 | Firefighting feedback | Troubleshooting based on fault levels | Firefighting feedback |
| 36 | Fire emergency operation indication | Overspeed stop running | Fire emergency operation indication |
| 37 | Parking switch | Terminal floor data correction | Parking switch |
| 38 | Troubleshooting based on fault levels | Passenger rescue first | Troubleshooting based on fault levels |
| 39 | Overspeed stop running | Interfere with the evaluation | Overspeed stop running |
| 40 | Terminal floor data correction | Light load anti - nuisance function | Terminal floor data correction |
| 41 | Passenger rescue first | Current harmonics removed | Passenger rescue first |
| 42 | Interfere with the evaluation | Intercom(Alarm system) | Interfere with the evaluation |
| 43 | Light load anti - nuisance function | Alarm bell | Light load anti - nuisance function |
| 44 | Current harmonics removed | Parameter copy | Current harmonics removed |
| 45 | Intercom(Alarm system) | User setting check | Intercom(Alarm system) |
| 46 | Alarm bell | Special display | Alarm bell |
| 47 | Parameter copying | Out - of - command call registration and memory display | Parameter copying |
| 48 | Parameter inspection | Running direction and floor display | User set inspection |
| 49 | Special display | Door open with floor button | Special display |
| 50 | Out - of - command call registration and memory display | Reverse hall call registration | Out - of - command call registration and memory display |
| 51 | Running direction and floor display | Anti - slip protection | Running direction and floor display |
| 52 | Door open with floor button | Program running WTD protection | Door open with floor button |
| 53 | Reverse hall call registration | Power failure data holding | Reverse hall call registration |
| 54 | Anti - slip protection | Automatic main floor returning | Anti - slip protection |
| 55 | Program running WTD protection | Emergency car lighting | Program running WTD protection |
| 56 | Power failure data holding | Landing display of out - of - service | Power failure data holding |

ELEVATOR STANDARD FUNCTION LIST



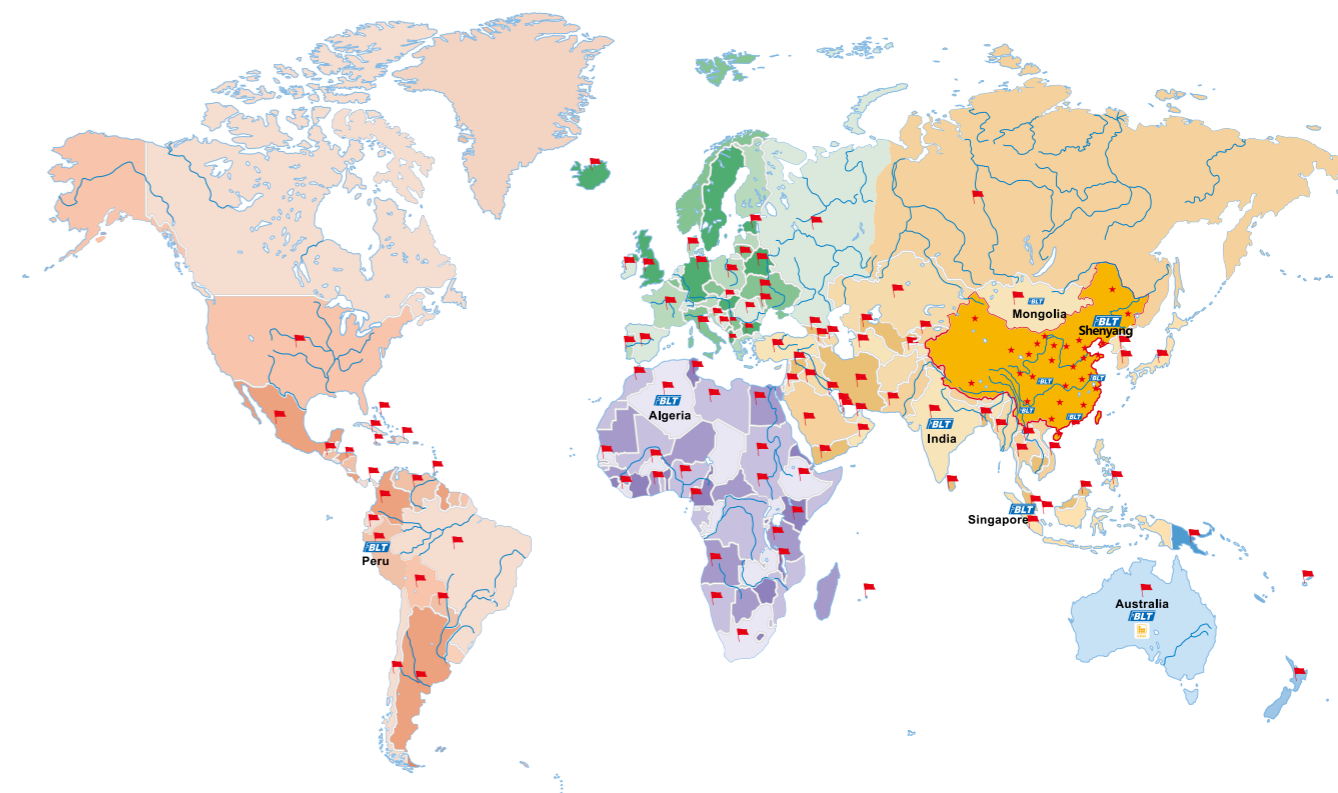
| Serial | Passenger and Panoramic Elevator Standard Function | Cargo Elevator Standard Function | Hospital Elevator Standard Function |
|--------|--|---|--|
| 57 | Automatic main floor returning | Door interlock short - circuit protection | Automatic main floor returning |
| 58 | Emergency car lighting | Brake monitoring function | Emergency car lighting |
| 59 | Landing display of out - of - service | Car accidental movement protection | Landing display of out - of - service |
| 60 | Landing door car door by pass function | Landing door car door by pass function | Door lock short circuit protection |
| 61 | Car arriving chime | Car arriving chime | Brake inspection function |
| 62 | Car arriving chime cancellation at night | Car arriving chime cancellation at night | Car accidental movement protection |
| 63 | Security floor function | Re - leveling | Landing door car door by pass |
| 64 | Automatic lock | Security floor function | car arriving chime |
| 65 | Motor overheat protection | Automatic lock | Car arriving chime cancellation at night |
| 66 | | Motor overheat protection | Re - levelling |
| 67 | | | Security floor function |
| 68 | | | Automatic lock |
| 69 | | | Motor overheat protection |

ELEVATOR OPTIONAL FUNCTION LIST



| Serial | Passenger Elevator Optional Function List | Cargo elevator optional function list | Hospital elevator optional function list |
|--------|---|---|---|
| 1 | Duplex running | Integrated light curtain and door safety edge | Duplex running |
| 2 | Group control running | Door nudging | Group control running |
| 3 | Distribution waiting | Earthquake emergency travel | Distribution waiting |
| 4 | Peak service | ARD(automatic rescue device) | Peak service |
| 5 | Nearest priority service | Standby power transfer device | Nearest priority service |
| 6 | Integrated light curtain and door safety edge | Standby power travel | Integrated light curtain and door safety edge |
| 7 | Door nudging | Voice announcement function | Door nudging |
| 8 | Earthquake emergency travel | Background music function | Earthquake emergency travel |
| 9 | ARD(automatic rescue device) | Hall lantern | ARD(automatic rescue device) |
| 10 | Standby power transfer device | Car camera device | Standby power transfer device |
| 11 | Standby power transfer device interface | Car camera interface reserved | Standby power transfer device interface |
| 12 | Voice announcement function | Auxiliary car operation panel | Voice announcement function |
| 13 | Background music function | Through opening door function | Background music function |
| 14 | Hall lantern | Internet function | Hall lantern |
| 15 | Car camera device | Integrated hall lantern and chime | Car camera device |
| 16 | Car camera interface reserved | IC card function | Car camera interface reserved |
| 17 | Auxiliary car operation panel | Operation panel for the disabled | Auxiliary car operation panel |
| 18 | Through opening door function | Community monitoring function | Through opening door function |
| 19 | Internet of Things (IOT) function | Standby power transfer device interface | Internet of Things (IOT) function |
| 20 | Integrated hall lantern and chime | Pre - opening | Integrated hall lantern and chime |
| 21 | IC card function | | IC card function |
| 22 | Operation panel for the disabled | | Operation panel for the disabled |
| 23 | Energy feedback device | | Energy feedback device |
| 24 | Destination floor group control | | Community monitoring function |
| 25 | Community monitoring function | | Standby power transfer device interface |
| 26 | Standby power transfer device interface | | Pre - opening |
| 27 | Door lock short circuit protection | | |
| 28 | Brake monitoring function | | |
| 29 | Car accidentally move protection | | |
| 30 | Pre - opening | | |
| 31 | Re - leveling function | | |

GLOBAL MARKETING NETWORK



🚩 | Countries which BLT elevators have been exported to

BLT | Subsidiaries wholly owned by Shenyang Brilliant Elevator affiliated with Yuanda Intellectual Industry Group

★ | Domestic branches of Brilliant Elevator

Main subsidiaries and Joint venture

- Brilliant Elevator (Singapore) Pte Co., Ltd (wholly - owned subsidiary)
- Brilliant Elevator Mongolia Co., Ltd (wholly - owned subsidiary)
- Brilliant Elevator Peru Co., Ltd (wholly - owned subsidiary)
- Brilliant Elevator Australia JV Co., Ltd (joint - stock company)
- India Brilliant Elevator Pte Co., Ltd (wholly - owned subsidiary)
- Shenyang Brilliant Elevator Installation Company (wholly - owned subsidiary)
- Chongqing Brilliant Elevator Co.,Ltd (wholly - owned subsidiary)
- Yunnan Brilliant Elevator Co.,Ltd (wholly - owned subsidiary)
- Nanjing Yuanda Intelligent Industry Co., Ltd.(wholly - owned subsidiary)
- Guangdong Brilliant Elevator Co.,Ltd (wholly - owned subsidiary)